



CannaBusiness Laboratories, LLC

2554 Palumbo Dr. Lexington, KY 40509

Certificate of Analysis

Customer:
Palmetto Synergistic Research
8856 Pee Dee Hwy
Conway, SC 29527

Sample ID: **210120009**
Order Number: **CB210120004**
Sample Name: **Hemp 15 Tincture**

Collected Date:
Received Date: **1/20/2021**
COA Released: **1/27/2021**

External Sample ID:
Batch Number: **21019**
Product Type: **Edible**
Sample Type: **Edible**

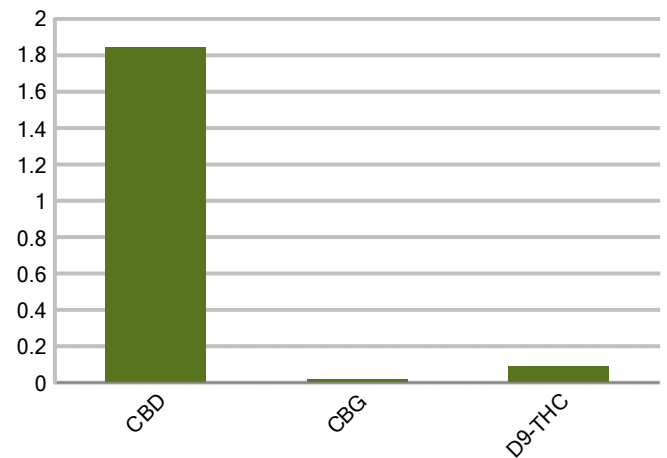
Comments:

CANNABINOID PROFILE

Analyte	LOQ (%)	% weight	mg/ml
CBC	0.01	ND	ND
CBD	0.01	1.844	17.15
CBDa	0.01	ND	ND
CBDV	0.01	ND	ND
CBG	0.01	0.017	0.157
CBGa	0.01	ND	ND
CBN	0.01	ND	ND
d8-THC	0.01	ND	ND
d9-THC	0.01	0.089	0.825
THCa	0.01	ND	ND
Total Cannabinoids		1.950	18.14
Total Potential THC		0.089	0.825
Total Potential CBD		1.844	17.15
Total Potential CBG		0.017	0.157



Cannabinoids (% weight)



Ratio of Total Potential CBD to Total Potential THC 20.72 : 1

Ratio of Total Potential CBG to Total Potential THC 0.19 : 1

**Total Cannabinoids refers to the sum of all cannabinoids detected.*

**Total Potential CBD = (0.877 x CBDa) + CBD. *Total Potential THC = (0.877 x THCa) + THC. *Total Potential CBG = (0.877 x CBGa) + CBG.*

**Total Potential THC/CBD are calculated to take into account the loss of an acid group during decarboxylation.*



PJLA
Testing
Accreditation #109588

Authorized Signature

Laboratory Manager

Jamie Hobgood

01/27/2021 9:06 AM

DATE

This product has been tested by CannaBusiness Laboratories using validated testing methodologies and a quality system. Values reported relate only to the product tested. CannaB Laboratories makes no claims as to the efficacy, safety, or other risks associated with any detected or non-detected levels of any compounds reported herein. This Certificate shall not be reproduced except in full, without the written permission of CannaBusiness Laboratories. Uncertainty information is available on request. Photo is of sample received by the lab in original packaging. The results apply to the sample as received. ISO/IEC 17025:2017 Accredited.



CannaBusiness Laboratories, LLC
2554 Palumbo Dr. Lexington, KY 40509



Sample ID: 210120009
Sample Name: Hemp 15 Tincture
Sample Type: Edible

Certificate of Analysis

Customer

Palmetto Synergistic Research
8856 Pee Dee Hwy
Conway, SC 29527



Overall Batch Results

PASS

Pesticide PASS	Moisture Content N/A
Potency PASS	Water Activity N/A
Mycotoxins PASS	Heavy Metals PASS
Microbial Screen PASS	Residual Solvents N/A
Terpenoids N/A	

Sample Name: Hemp 15 Tincture

Sample ID: 210120009

Product Type: Edible

Sample Type: Edible

Collected Date:

Received Date: 01/20/2021

Batch Number: 21019

Batch Size:

Sample Size:

COA released: 01/27/2021 9:06 AM

Potency

Date Tested: 01/21/2021

Method:

Instrument:

0.089 %	1.844 %	1.950 %	NT
Total THC	Total CBD	Total Cannabinoids	Total Cannabinoids

Analyte	Result	Units	LOQ	Result	Units
CBC (Cannabichromene)	ND	%	0.010	ND	mg/mL
CBD (Cannabidiol)	1.844	%	0.010	17.15	mg/mL
CBDa (Cannabidiolic Acid)	ND	%	0.010	ND	mg/mL
CBDV (Cannabidivarin)	ND	%	0.010	ND	mg/mL
CBG (Cannabigerol)	0.017	%	0.010	0.157	mg/mL
CBGa (Cannabigerolic Acid)	ND	%	0.010	ND	mg/mL
CBN (Cannabinol)	ND	%	0.010	ND	mg/mL
D8-THC (D8-Tetrahydrocannabinol)	ND	%	0.010	ND	mg/mL
D9-THC (D9-Tetrahydrocannabinol)	0.089	%	0.010	0.825	mg/mL
THCa (Tetrahydrocannabinolic Acid)	ND	%	0.010	ND	mg/mL

Pesticides

Date Tested: 01/20/2021

Method:

Instrument:

Analyte	Result	Units	LOQ	Result	Analyte	Result	Units	LOQ	Result
Acephate	NT	ppm	0.010	Pass	Acetamiprid	NT	ppm	0.010	Pass
Aldicarb	NT	ppm	0.010	Pass	Azoxystrobin	<LOQ	ppm	0.010	Pass
Bifenazate	<LOQ	ppm	0.010	Pass	Bifenthrin	<LOQ	ppm	0.010	Pass
Boscalid	NT	ppm	0.010	Pass	Carbaryl	NT	ppm	0.010	Pass
Carbofuran	NT	ppm	0.010	Pass	Chlorantraniliprole	NT	ppm	0.010	Pass
Chlorpyrifos	NT	ppm	0.010	Pass	Clofentezine	NT	ppm	0.010	Pass
Coumaphos	NT	ppm	0.010	Pass	Daminozide	NT	ppm	0.010	Pass
Diazinon	NT	ppm	0.010	Pass	Dichlorvos	<LOQ	ppm	0.010	Pass
Dimethoate	NT	ppm	0.010	Pass	Etofenprox	NT	ppm	0.010	Pass
Etoxazole	<LOQ	ppm	0.010	Pass	Fenhexamid	NT	ppm	0.010	Pass
Fenoxycarb	<LOQ	ppm	0.010	Pass	Fenpyroximate	NT	ppm	0.010	Pass
Fipronil	NT	ppm	0.010	Pass	Fonicamid	NT	ppm	0.010	Pass
Fludioxonil	NT	ppm	0.010	Pass	Hexythiazox	NT	ppm	0.010	Pass
Imazalil	<LOQ	ppm	0.010	Pass	Imidacloprid	<LOQ	ppm	0.010	Pass
Malathion	NT	ppm	0.010	Pass	Metalaxyl	NT	ppm	0.010	Pass
Methiocarb	NT	ppm	0.010	Pass	Methomyl	NT	ppm	0.010	Pass
Myclobutanil	<LOQ	ppm	0.010	Pass	Naled	NT	ppm	0.010	Pass

NT = Not tested, ND = Not detected; LOQ = Limit of Quantitation; <LOQ = Detected; >ULOL = Above upper limit of linearity; CFU/g = Colony forming units per 1 gram; TNTC = Too numerous to count

CannaBusiness Laboratories
License # P-0059: (859)-514- 6999 <https://www.cannabusinesslabs.us>

This product has been tested by CannaBusiness Laboratories using validated testing methodologies and a quality system. Values reported relate only to the product tested. CannaBusiness Laboratories makes no claims as to the efficacy, safety, or other risks associated with any detected or non-detected levels of any compounds reported herein. This Certificate shall not be reproduced except in full, without the written permission of CannaBusiness Laboratories. Uncertainty information is available on request. Photo is of sample received by the lab and may vary from final packaging. The results apply to the sample as received. ISO/IEC 17025:2017 Accredited.



Sample ID: 210120009
Sample Name: Hemp 15 Tincture
Sample Type: Edible

Certificate of Analysis

Pesticides								
Date Tested: 01/20/2021		Method:			Instrument:			

Analyte	Result	Units	LOQ	Result	Analyte	Result	Units	LOQ	Result
Oxamyl	NT	ppm	0.010	Pass	Paclobutrazol	<LOQ	ppm	0.010	Pass
Phosmet	NT	ppm	0.010	Pass	Prallethrin	NT	ppm	0.010	Pass
Propiconazole	NT	ppm	0.010	Pass	Propoxur	NT	ppm	0.010	Pass
Pyrethrin I	<LOQ	ppm	0.010	Pass	Pyrethrin II	<LOQ	ppm	0.010	Pass
Pyridaben	NT	ppm	0.010	Pass	Spinetoram	NT	ppm	0.010	Pass
Spiromesifen	<LOQ	ppm	0.010	Pass	Spirotetramat	<LOQ	ppm	0.010	Pass
Tebuconazole	NT	ppm	0.010	Pass	Thiacloprid	NT	ppm	0.010	Pass
Thiamethoxam	NT	ppm	0.010	Pass	Trifloxystrobin	<LOQ	ppm	0.010	Pass
Ethoprophos	NT	ppm	0.010	Pass	Kresoxym-methyl	NT	ppm	0.010	Pass
Permethrins	NT	ppm	0.010	Pass	Piperonyl Butoxide	<LOQ	ppm	0.010	Pass
Spinosyn A	<LOQ	ppm	0.010	Pass	Spiroxamine-1	NT	ppm	0.010	Pass
AbamectinB1a	NT	ppm	0.010	Pass	Spinosyn D	<LOQ	ppm	0.010	Pass

Mycotoxins								
Date Tested: 01/23/2021		Method:			Instrument:			

Analyte	Result	Units	LOQ	Result	Analyte	Result	Units	LOQ	Result
Ochratoxin A	ND	ppm	0.010	Pass	Aflatoxin B1	ND	ppm	0.010	Pass
Aflatoxin G2	ND	ppm	0.010	Pass	Aflatoxin B2	ND	ppm	0.010	Pass
Aflatoxin G1	ND	ppm	0.010	Pass					

Metals								
Date Tested: 01/25/2021		Method:			Instrument:			

Analyte	Result	Units	LOQ	Result	Analyte	Result	Units	LOQ	Result
Arsenic	<LOQ	ppm	0.500	Pass	Cadmium	<LOQ	ppm	0.500	Pass
Lead	<LOQ	ppm	0.500	Pass	Mercury	<LOQ	ppm	3.000	Pass

Microbial								
Date Tested: 01/26/2021		Method:			Instrument:			

Analyte	Result	Units	LOQ	Result	Analyte	Result	Units	LOQ	Result
STEC (E. coli)	Negative			Pass	Salmonella	Negative			Pass
Listeria spp.	Negative			Pass	L. monocytogenes	Negative			Pass
Yeast/Mold	0	CFUs		Pass					



Authorized Signature

J. Hobgood
Laboratory Manager

Jamie Hobgood

01/27/2021 9:06 AM

Date Time

NT = Not tested, ND = Not detected; LOQ = Limit of Quantitation; <LOQ = Detected; >ULOL = Above upper limit of linearity; CFU/g = Colony forming units per 1 gram; TNTC = Too numerous to count

CannaBusiness Laboratories
License # P-0059: (859)-514- 6999 <https://www.cannabusinesslabs.us>

This product has been tested by CannaBusiness Laboratories using validated testing methodologies and a quality system. Values reported relate only to the product tested. CannaBusiness Laboratories makes no claims as to the efficacy, safety, or other risks associated with any detected or non-detected levels of any compounds reported herein. This Certificate shall not be reproduced except in full, without the written permission of CannaBusiness Laboratories. Uncertainty information is available on request. Photo is of sample received by the lab and may vary from final packaging. The results apply to the sample as received. ISO/IEC 17025:2017 Accredited.